

Demographic and Income Profile

Gallatin City, TN
 Gallatin City, TN (4728540)
 Geography: Place

Prepared by Forward Sumner

Summary	Census 2010	Census 2020	2022	2027
Population	32,309	44,746	48,754	52,589
Households	12,721	17,923	19,674	21,293
Families	8,667	-	13,113	14,113
Average Household Size	2.47	2.45	2.44	2.43
Owner Occupied Housing Units	8,084	-	12,711	14,083
Renter Occupied Housing Units	4,638	-	6,963	7,210
Median Age	37.8	-	39.9	40.9

Trends: 2022-2027 Annual Rate	Area	State	National
Population	1.53%	0.52%	0.25%
Households	1.59%	0.55%	0.31%
Families	1.48%	0.45%	0.28%
Owner HHs	2.07%	0.77%	0.53%
Median Household Income	3.47%	3.87%	3.12%

Households by Income	2022		2027	
	Number	Percent	Number	Percent
<\$15,000	1,034	5.3%	778	3.7%
\$15,000 - \$24,999	1,031	5.2%	811	3.8%
\$25,000 - \$34,999	1,664	8.5%	1,412	6.6%
\$35,000 - \$49,999	2,971	15.1%	2,789	13.1%
\$50,000 - \$74,999	3,936	20.0%	3,981	18.7%
\$75,000 - \$99,999	2,565	13.0%	2,990	14.0%
\$100,000 - \$149,999	3,742	19.0%	4,863	22.8%
\$150,000 - \$199,999	1,386	7.0%	1,916	9.0%
\$200,000+	1,346	6.8%	1,753	8.2%
Median Household Income	\$68,206		\$80,896	
Average Household Income	\$96,059		\$111,368	
Per Capita Income	\$38,041		\$44,237	

Population by Age	Census 2010		2022		2027	
	Number	Percent	Number	Percent	Number	Percent
0 - 4	2,289	7.1%	2,870	5.9%	3,041	5.8%
5 - 9	2,176	6.7%	2,992	6.1%	3,104	5.9%
10 - 14	2,065	6.4%	3,103	6.4%	3,231	6.1%
15 - 19	2,062	6.4%	2,825	5.8%	3,065	5.8%
20 - 24	1,956	6.1%	2,725	5.6%	2,865	5.4%
25 - 34	4,401	13.6%	6,616	13.6%	6,790	12.9%
35 - 44	4,216	13.1%	6,500	13.3%	7,072	13.4%
45 - 54	4,670	14.5%	5,890	12.1%	6,478	12.3%
55 - 64	3,969	12.3%	6,330	13.0%	6,222	11.8%
65 - 74	2,518	7.8%	5,224	10.7%	5,929	11.3%
75 - 84	1,407	4.4%	2,731	5.6%	3,655	6.9%
85+	577	1.8%	948	1.9%	1,138	2.2%

Race and Ethnicity	Census 2010		Census 2020		2022		2027	
	Number	Percent	Number	Percent	Number	Percent	Number	Percent
White Alone	25,702	79.5%	31,612	70.6%	35,230	72.3%	37,779	71.8%
Black Alone	4,369	13.5%	6,618	14.8%	6,565	13.5%	6,790	12.9%
American Indian Alone	96	0.3%	215	0.5%	222	0.5%	247	0.5%
Asian Alone	232	0.7%	755	1.7%	798	1.6%	915	1.7%
Pacific Islander Alone	45	0.1%	30	0.1%	31	0.1%	34	0.1%
Some Other Race Alone	1,227	3.8%	1,990	4.4%	2,066	4.2%	2,299	4.4%
Two or More Races	639	2.0%	3,526	7.9%	3,841	7.9%	4,525	8.6%
Hispanic Origin (Any Race)	2,266	7.0%	4,421	9.9%	4,565	9.4%	5,050	9.6%

Data Note: Income is expressed in current dollars.

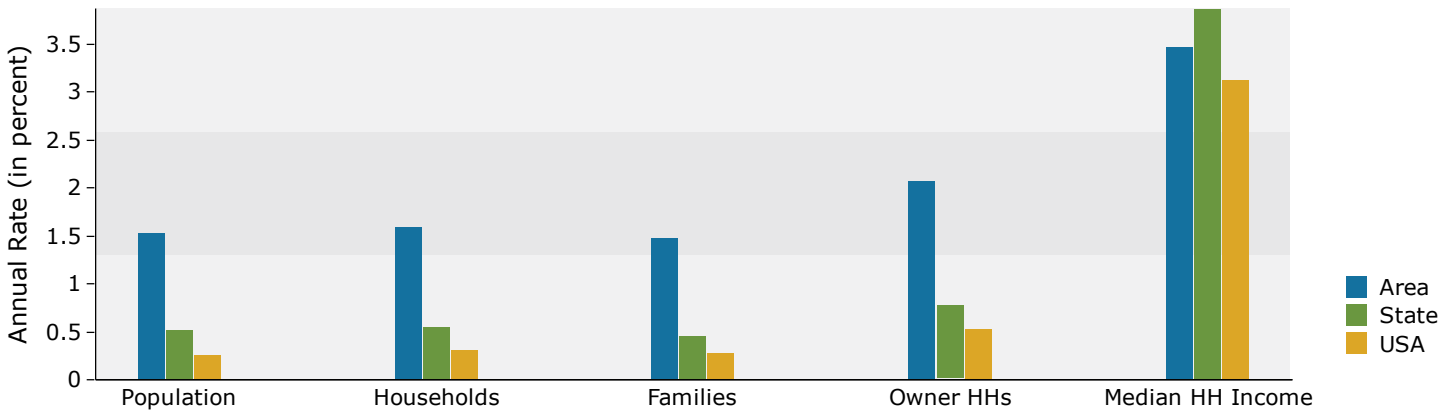
Source: Esri forecasts for 2022 and 2027. U.S. Census Bureau 2010 decennial Census data converted by Esri into 2020 geography.

Demographic and Income Profile

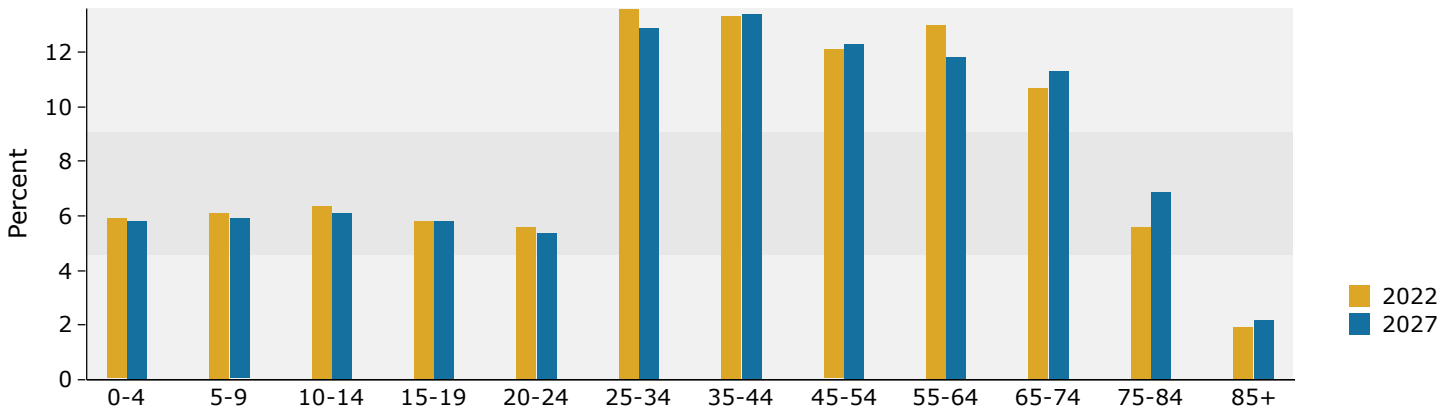
Gallatin City, TN
 Gallatin City, TN (4728540)
 Geography: Place

Prepared by Forward Sumner

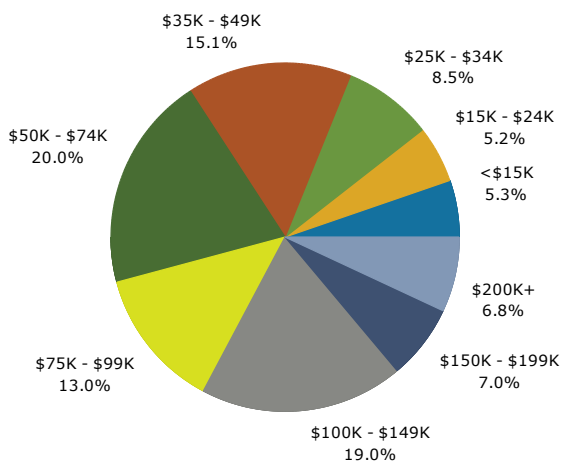
Trends 2022-2027



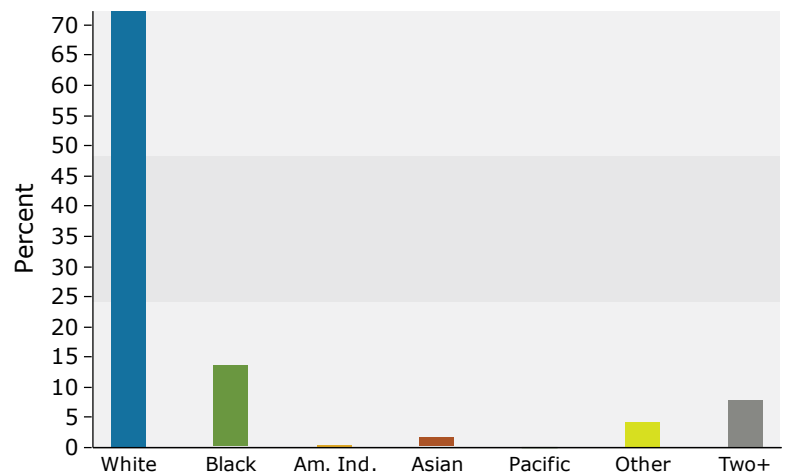
Population by Age



2022 Household Income



2022 Population by Race



2022 Percent Hispanic Origin: 9.4%

Source: Esri forecasts for 2022 and 2027. U.S. Census Bureau 2010 decennial Census data converted by Esri into 2020 geography.