



Message from 2021 Chair Hillary Goodall-Bonham

I have known Forward Sumner since early in my professional career. The three-year cycle as incoming, chair, and outgoing, provides an exceptional professional development experience. The opportunity to work with the Forward Sumner staff and to be surrounded with business titans that represent the holistic Sumner County approach to economic development is a joy and a learning laboratory.

I will attest that Forward Sumner lives its core values - strategic, collaborative, county focused, outward facing and relationship based.

The strategic initiatives...

Community
Development &
Infrastructure

Workforce
Development

Economic
Development

Investor &
Stakeholder
Relations

Operations

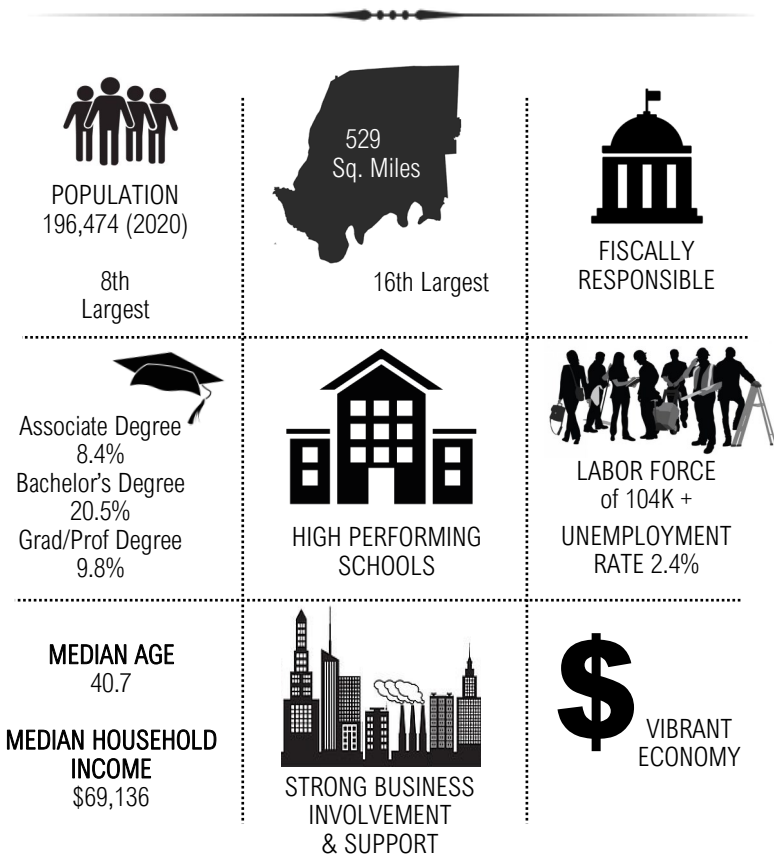
are built through a 5-year strategic plan and implemented within a 2-year tactical plan. The program initiatives are timely and vital to create economic growth opportunities. A good example is the SR-386 Vietnam Veterans Blvd. project which is on the TDOT books for \$512 million to expand and modernize the

2021 Chair Hillary Goodall-Bonham

transportation corridor from I-65 in Goodlettsville to SR 109 in Gallatin. Strategic, county focused and outward facing inform the collaborative and consensus approach that will literally pay dividends over the next 10 years.

The workforce development community that is being created through the Forward Sumner Workforce Cabinet will be a singular program that is already being recognized as a best practice throughout the state.

When your thoughts, words, and actions align you are authentic. Forward Sumner is authentic and unique. It is the countywide entity that offers programs and services to develop and foster economic opportunities. I believe it is time to explore broadening the structure and scope of Forward Sumner. Any initiative that we engage in will be built around our core values of county focused and collaboration. I look forward to discussing our thoughts with you, so that our words and actions are in alignment with the investors and stakeholders in 2022.



WORKFORCE DEVELOPMENT

Workforce Cabinet

| MEMBER | |
|---|--|
| President, Volunteer State Community College Dr. Orinthia Montague | |
| Director, Sumner County Schools Dr. Del Phillips | |
| President, TN Colleges of Applied Technology Nathan Garrett | |
| Chair, Northern Middle Workforce Board John Zobl | |
| President, Workforce Essentials Marla Rye | |
| Chief Local Elected Official (CLEO) Sumner County Mayor Anthony Holt | |
| Private Sector META – Tara Tenorio Gap, Inc. – Kevin Releford | |

PILOT of Certified Pathways, Health Sciences, Information Technology, Criminal Justice & Corrections, Construction

| PILOT Target Clusters | Health Sciences | Information Technology | Criminal Justice & Corrections | Construction | Music, Media & Entertainment |
|---|--|------------------------|--------------------------------|--------------|------------------------------|
| Career Exploration (in school) | 8th Grade Career Pathway Fairs Certified Pathways | | | | |
| | Summer Camps | | | | |
| Continuous Pathways / Stackable Credentials | In Achieves - Community Services TN Promise - TN Reconnect Industry Certifications & Early Post-Secondary Attainment | | | | |
| Work-Based Learning (school+workplace) | Career Exploration - Career Training Internships, Co-ops, Pre-Apprenticeship, Paid Work Experience | | | | |
| Employer Engagement (at workplace) | Workforce Training Internships, Co-ops, Pre-Apprenticeship, Paid Work Experience | | | | |
| Workforce Services | Special Industry Core Curriculum Classes Incumbent Worker Training Recruitment Materials / Information & Job Fairs / Job Posting & Screening Process | | | | |

A community navigator is the intermediary organization, the one external partner, that will activate and sustain relationships across the workforce cabinet, private sector, and community partners.

Forward Sumner will provide and oversee the strategic plan:

- operationalize and manage program activities and deliverables to achieve goals and outcomes
- broker and leverage resources, including fiscal, as needed
- communicate and advocate for the goals across diverse stakeholders and groups to coalesce priorities

Forward Sumner will provide the last mile support. The vital community navigator tools include developing, mobilizing, translating, and advocating for the education to workforce learner pathway policies and local initiatives.

A learner pathway is a structured sequence of academic courses, technical training, and related work experiences that help learners develop the skills and knowledge they need to be successful in the work and career of their choice.

Supporting learner pathways is the approach that will pay dividends, including monetary dividends. Providing new work-based learning opportunities will promote local economic recovery and will address the need for local talent.

The work will establish partnerships with employers and associations across industry sectors that create a learning delivery model at scale and allows students and employees to learn in the classroom and on-site settings.

Work-based learning fosters in-depth, firsthand experience in performing tasks that are required in a career field, and to perform work tasks that are aligned to the training curriculum and instruction.

Forward Sumner, as the community navigator and intermediary organization, will develop and promote robust work-based learning programs at the county, regional, and state level. This includes putting the employers and business people in the process of creating content for the participants in the real world opportunities

Technology makes personalization and scale possible. Data enables us to know what works and what doesn't. Virtual is here to stay. Diversity is crucial. Work-related experiences and career readiness curriculums are better integrated into the learning experience, but we are just now at the experimental stage.

Forward Sumner has worked with County Mayor Holt's office and ThreeStar Grant coordinator Jaime Muncy to address the TN ECD IPA or the Identified Priority Area of Workforce Development. The current grant work created the FSEP Workforce Cabinet and access to the best national databases including Chmura and Emsi. A data scientist is engaged to interpret the occupation data and to map the cabinet's education partners curriculum for alignment with the work-based learning partners. The newly formed center for labor market intelligence is the foundation for the data driven decision making. The grant work is also providing a gap analysis as to where a community navigator could help support, build a bridge, and connect the providers to the students, adult learners, parents, counselors, employees and employers.



ThreeStar



GIVE
Governor's Investment in
Vocational Education

One of Governor Bill Lee's early initiatives after he took office in 2019 was the creation of the Governor's Investment

in Vocational Education (GIVE) program. In October 2021, Sumner County Schools in partnership with the TN College of Applied Technology (TCAT) – Hartsville, with advocacy and assistance from Forward Sumner was awarded a GIVE 2.0 grant. The grant will support the career and technical education (CTE) programs at the new Liberty Creek high school scheduled to open in the summer of 2022. Specifically, the \$500K+ will be used to purchase equipment for advanced manufacturing and mechatronics, offer dual enrollment, provide work-based learning options and institute a work ethic program.

COMMUNITY DEVELOPMENT & INFRASTRUCTURE

Forward Sumner is the public-private office which coordinates the infrastructure improvements to the Sumner County transportation corridors

The FSEP Community Development & Infrastructure Committee meets quarterly or as needed and consists of the County Mayor, Mayors and/or City Managers, and FSEP Investors.

The committee works to develop a consensus and a unified voice that represents the county and cities transportation corridors, and brings the unified voice to the MPO - Transportation Policy Board (TPB) and the Tennessee Department of Transportation.

Primary Sumner County Transportation Corridors

State Route 109
Interstate-65
SR 386-Vietnam Veterans Boulevard

TDOT Projects for Sumner County Transportation Corridors
MPO 2045 Regional Transportation Plan (RTP)

| | |
|---|------------------------|
| • NETcorridor—Northeast Transportation Corridor-SR 386 | \$512M |
| Section 1 & 2 from I-65 in Goodlettsville to SR 109 in Gallatin | |
| • SR 109 Portland Bypass | \$146M |
| 2 Sections (Northern \$99M) (Southern \$47M) | |
| • I-65 | \$549M |
| 4 Sections | |
| TOTAL | \$1.207 Billion |

2045 MPO Regional Transportation Plan (RTP)

Sumner County
TDOT/County/Cities

88 Projects | \$2.5 Billion

I-65, Section 4 – from near SR 25 Cottontown to near SR 109 Portland, exit 121

This segment was let for construction in August, 2021, and at 9.3 miles and \$160.2M it is the single longest contract in length and the single most costly. The project is projected to be complete in late 2025.

A Sumner County Transportation Corridor Project

NETcorridor – Northeast Transportation Corridor

Vietnam Veterans Blvd. (State Route 386)

\$512M 5-star consensus regional capital improvements priority project as designated by TN Department of Transportation and the MPO-Transportation Policy Board

Sections 1 & 2—I-65 @Exit 95 in Goodlettsville to State Route 109 in Gallatin
Construction on Section 1 set for 2024, through the alternative contract build.

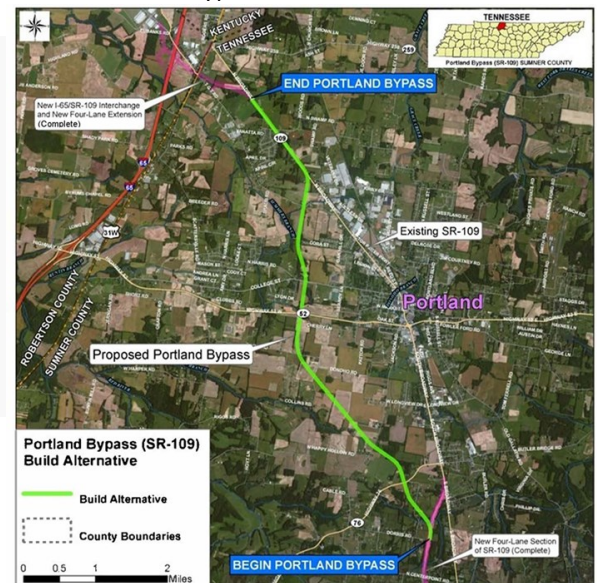
- 6 general purpose lanes
- 2 managed transit lanes, designed as outside wide shoulders TBD
- Additional auxiliary merging lanes from exit 2 to exit 8
- Inside shoulder designed and built for a future transit lane
- TDOT feasibility study showing potential connections of SR386 to SR109 in Gallatin

FY 2022 Sections 3-4-5

- SR 109 to SR 31 E (SR 6) outside Gallatin to Westmoreland
- Work toward an MPO/TPB Unified Work Plan Study
- Update MPO/TPB regional priority commitment language

Sumner County Transportation Corridor

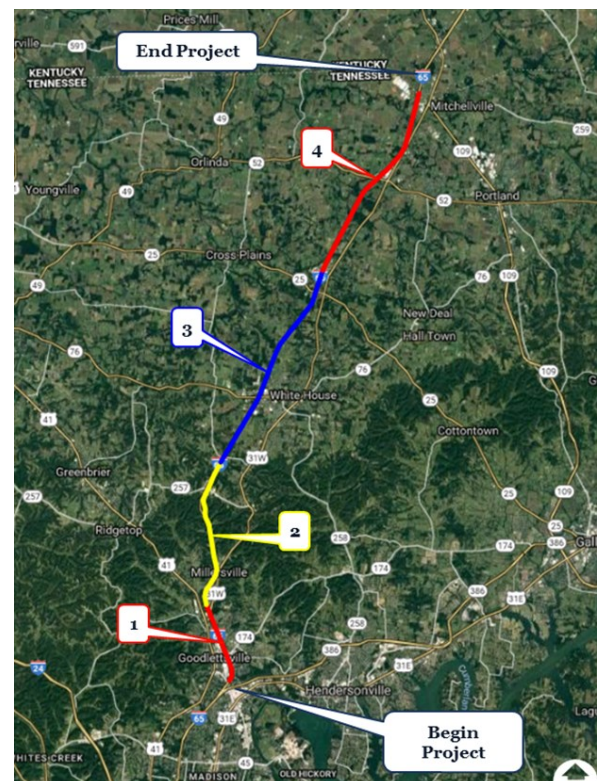
SR109 Portland Bypass



**SR109 Ribbon Cutting Ceremony
Widening from the
Cumberland River to US70
11/24/2021 10 am**

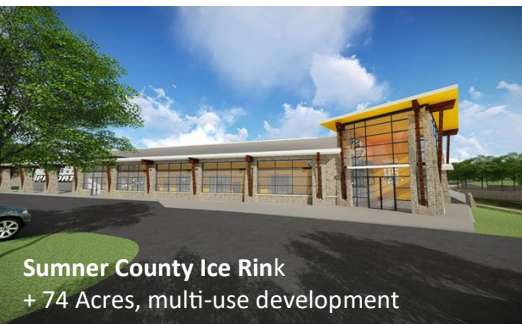
Sumner County Transportation Corridor

I-65 Widening North of Nashville



4 Segments | \$500M+ | 5-7 Year Horizon

ECONOMIC DEVELOPMENT



Sumner County Ice Rink
+ 74 Acres, multi-use development



Notable and recent economic development projects include:

The Predators Ice Rink facility is the anchor tenant for the Goat Farm development. The ice rink is a 100,00sf facility featuring two sheets of ice playing surfaces, private and public locker rooms, a weight room, and a hockey pro shop with a seating capacity of 1,000+. The Ice Rink is a public private partnership between the County, Gallatin and Hendersonville, and the Sports and Entertainment company representing the NHL Nashville Predators team. The Goat Farm is a 74 acre multi-use development to include a hotel, retail and restaurants, exercise and entertainment venues and residential housing.

Exit 9 off of Vietnam Veterans Boulevard drops traffic right at the front door of this sure to be destination development which is located at the corner of Nashville Pike and Shutes Lane on land that is partially located in the County



Music City Studios
800,000 sf, four buildings, \$100M



Comer Barn - Rogers Group - Sumner Schools
CTE Agricultural & Technology Center

and the cities of Gallatin and Hendersonville.

Music City Studios is a 47-acre creative campus, think a shopping mall for entertainment technology employees, that will bring together Music, Film, Broadcast, and the Metaverse in a single location. The first of its kind in North America. The \$100 million capital investment is expected to generate 800 high skilled, high wage jobs with a distinctive coolness factor across film, live music, broadcast, and media productions. The 800,000 sf spread across four buildings for digital creatives will include sound stages and full size practice space for touring acts and is located in the Freehill Business Park in Hendersonville. The Forward Sumner Workforce Cabinet is forging a strong work-based learning partnership alignment for the employer and employee pipeline.

Gap, Inc. – an existing industry in Gallatin since 1996 completed an \$85 million capital investment expansion in the 1.4 million square foot facility. GAP is a leading employer and a trend setter in workforce development and building an employee pipeline.

The Comer Barn is a unique project made possible by the Rogers Group and their gift of land and the facility. Sumner County Schools now owns the land and barns and plans a career and technical education (CTE) Agricultural and Technology Center in the estimated 8,800sf barn and the accompanying 47 acres.

INVESTOR & STAKEHOLDER RELATIONS

At the end of the 2021 calendar year a new Covid variant known as Omicron was surging and bringing infection rates hereto unseen or experienced.

The Sumner County infection rate soared to 2.6% in January of the new year in contrast to the worst and highest infection days in August when the Delta variant infection rate rose to 1.1%. The raw numbers of daily active infections were 4,096 in December, and 2,050 in August. The silver lining is that the Omicron variant was causing milder symptoms with less hospitalizations and significantly fewer deaths. Omicron is so contagious and the numbers are so high it is causing staffing issues across all industries, specifically in health services and schools. The CDC changed the quarantine guidelines to 5 days down from 10 days in the late fall. Although early data indicates that vaccine booster shots is helping to mitigate infections, Omicron has caused waves of breakthrough infections and reinfections.

The unvaccinated remain at the highest risk of hospitalizations and death. 90% of the hospitalizations with COVID – Omicron continue to be the unvaccinated.



Monday, January 15, 2022

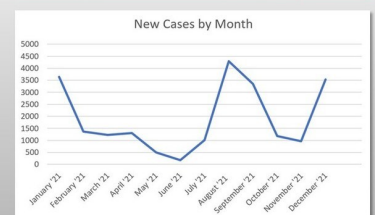


SUMNER COUNTY COVID DASHBOARD

| Average New Cases Per Day | |
|---------------------------|-----|
| January '21 | 121 |
| February '21 | 49 |
| March '21 | 40 |
| April '21 | 43 |
| May '21 | 18 |
| June '21 | 6 |
| July '21 | 32 |
| August '21 | 134 |
| September '21 | 112 |
| October '21 | 37 |
| November | 32 |
| December | 114 |
| January 1-15 '22 | 377 |

| Total Cases by Age as of 1/15/2022 | |
|------------------------------------|-------|
| 0-10 years | 2,879 |
| 11-20 years | 6,396 |
| 21-30 years | 7,270 |
| 31-40 years | 7,317 |
| 41-50 years | 6,954 |
| 51-60 years | 6,034 |
| 61-70 years | 4,146 |
| 71-80 years | 2,375 |
| 81+ years | 1,083 |
| Pending | 36 |

| Rolling Averages (New Cases) | 14-Day | 7-Day |
|------------------------------|--------|-------|
| Cases Per Day | 383 | 418 |
| Tests Per Day | 642 | 683 |
| Positivity Rate | 59.7% | 61.2% |



4,906
Current Active Cases

2.6%
Current Infection Rate

2.8% of all TN Cases
44,490
Total Confirmed Cases

2.8% of all TN Deaths
605
Total Deaths

3.3% of all TN Hospitalizations
1,461
Total Hospitalizations

Visit us at www.forwardsumner.org

1598 Green Lea Boulevard • Gallatin, TN 37066 • 615-206-6624