

# Demographic and Income Profile

Sumner County, TN 8  
 Sumner County, TN (47165)  
 Geography: County

Prepared by Forward Sumner

Summary	Census 2010	2019	2024
Population	160,645	191,428	208,105
Households	60,975	72,931	79,395
Families	44,593	52,666	57,077
Average Household Size	2.61	2.61	2.61
Owner Occupied Housing Units	45,068	56,671	61,675
Renter Occupied Housing Units	15,907	16,260	17,720
Median Age	38.5	40.4	41.4
Trends: 2019 - 2024 Annual Rate	Area	State	National
Population	1.68%	0.88%	0.77%
Households	1.71%	0.87%	0.75%
Families	1.62%	0.77%	0.68%
Owner HHs	1.71%	1.17%	0.92%
Median Household Income	2.31%	2.21%	2.70%

Households by Income	2019		2024	
	Number	Percent	Number	Percent
<\$15,000	5,283	7.2%	4,496	5.7%
\$15,000 - \$24,999	4,837	6.6%	4,227	5.3%
\$25,000 - \$34,999	5,081	7.0%	4,704	5.9%
\$35,000 - \$49,999	9,939	13.6%	9,932	12.5%
\$50,000 - \$74,999	16,711	22.9%	17,674	22.3%
\$75,000 - \$99,999	10,058	13.8%	11,238	14.2%
\$100,000 - \$149,999	11,836	16.2%	14,855	18.7%
\$150,000 - \$199,999	4,141	5.7%	5,893	7.4%
\$200,000+	5,045	6.9%	6,376	8.0%
Median Household Income	\$64,515		\$72,303	
Average Household Income	\$88,702		\$100,628	
Per Capita Income	\$33,804		\$38,400	

Population by Age	Census 2010		2019		2024	
	Number	Percent	Number	Percent	Number	Percent
0 - 4	10,467	6.5%	11,063	5.8%	11,823	5.7%
5 - 9	11,304	7.0%	12,047	6.3%	12,556	6.0%
10 - 14	11,829	7.4%	13,076	6.8%	13,736	6.6%
15 - 19	10,960	6.8%	12,038	6.3%	13,027	6.3%
20 - 24	8,338	5.2%	10,372	5.4%	10,495	5.0%
25 - 34	19,518	12.1%	23,607	12.3%	25,317	12.2%
35 - 44	23,258	14.5%	24,795	13.0%	27,096	13.0%
45 - 54	24,858	15.5%	26,599	13.9%	27,381	13.2%
55 - 64	19,851	12.4%	26,289	13.7%	27,671	13.3%
65 - 74	12,088	7.5%	19,307	10.1%	22,717	10.9%
75 - 84	5,983	3.7%	8,999	4.7%	12,378	5.9%
85+	2,191	1.4%	3,236	1.7%	3,908	1.9%

Race and Ethnicity	Census 2010		2019		2024	
	Number	Percent	Number	Percent	Number	Percent
White Alone	142,844	88.9%	164,551	86.0%	175,606	84.4%
Black Alone	10,311	6.4%	14,927	7.8%	17,879	8.6%
American Indian Alone	462	0.3%	583	0.3%	649	0.3%
Asian Alone	1,638	1.0%	2,682	1.4%	3,494	1.7%
Pacific Islander Alone	114	0.1%	161	0.1%	192	0.1%
Some Other Race Alone	2,649	1.6%	4,188	2.2%	4,995	2.4%
Two or More Races	2,627	1.6%	4,336	2.3%	5,290	2.5%
Hispanic Origin (Any Race)	6,308	3.9%	10,009	5.2%	12,316	5.9%

**Data Note:** Income is expressed in current dollars.

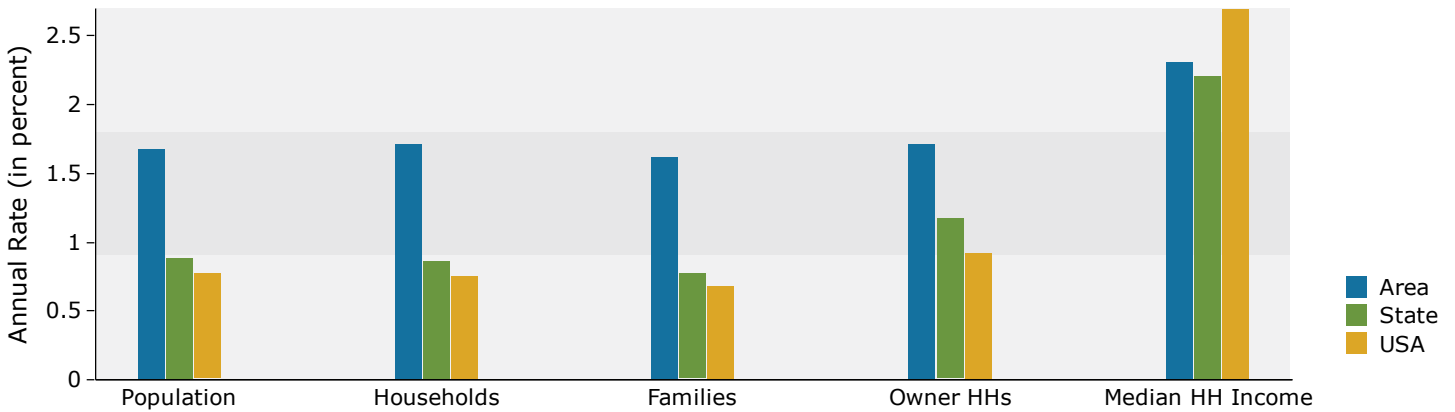
**Source:** U.S. Census Bureau, Census 2010 Summary File 1. Esri forecasts for 2019 and 2024.

# Demographic and Income Profile

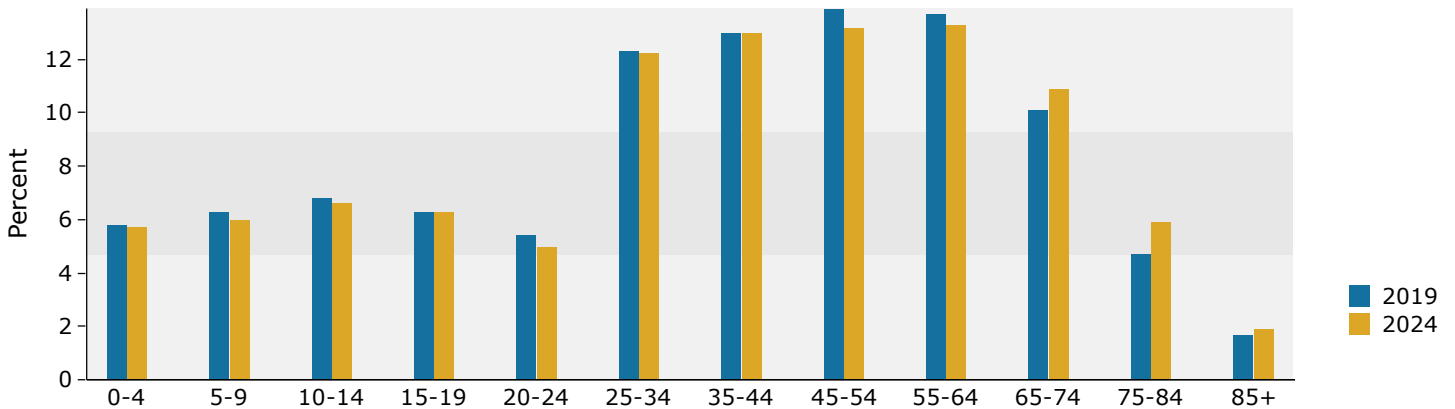
Sumner County, TN 8  
 Sumner County, TN (47165)  
 Geography: County

Prepared by Forward Sumner

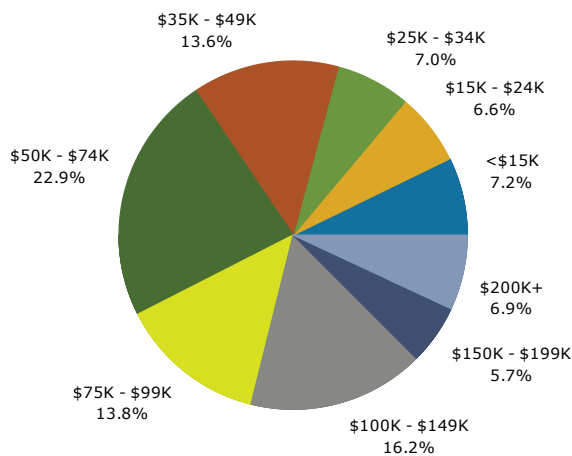
## Trends 2019-2024



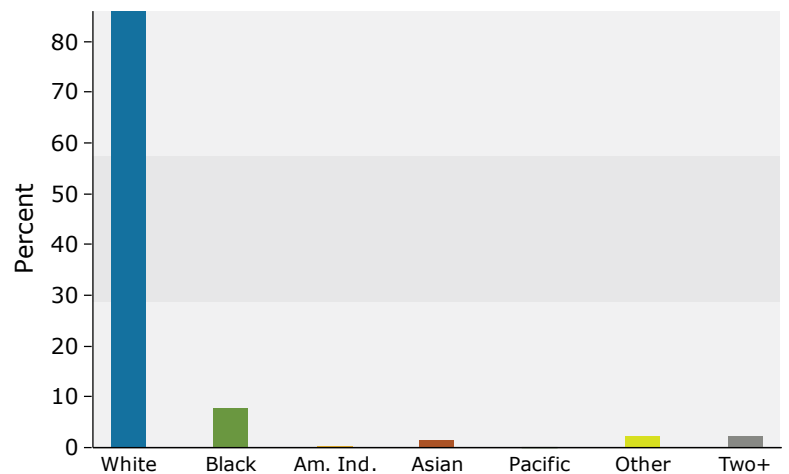
## Population by Age



## 2019 Household Income



## 2019 Population by Race



2019 Percent Hispanic Origin: 5.2%

Source: U.S. Census Bureau, Census 2010 Summary File 1. Esri forecasts for 2019 and 2024.